

Castel del Monte

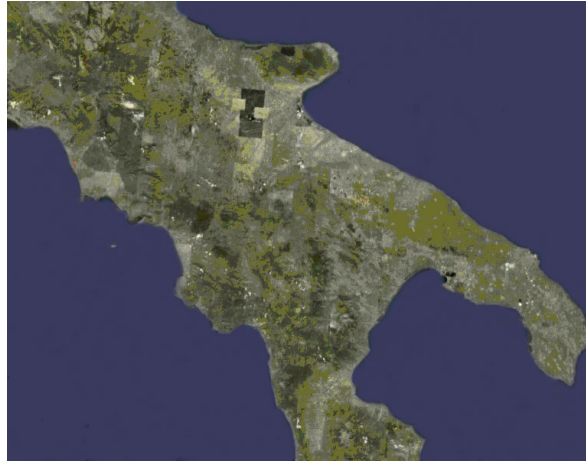
Photo Review

Dec. 2010

Domenico Lanera



Satellite view of the location – Google Map



Castel del Monte – Photo Review – Dec 2010 (File 820-120)

Old aerial picture (Internet source)



Castel del Monte – Photo Review – Dec 2010 (File 820-120)

Aerial picture revealing the repeating octagonal theme



f-0806-1151-castel-del-mon.jpg

Castel del Monte – View from the East



cdm-g110-p101-jm.jpg

Castel del Monte – View from the North



cdm-g110-p103-jm.jpg

Castel del Monte

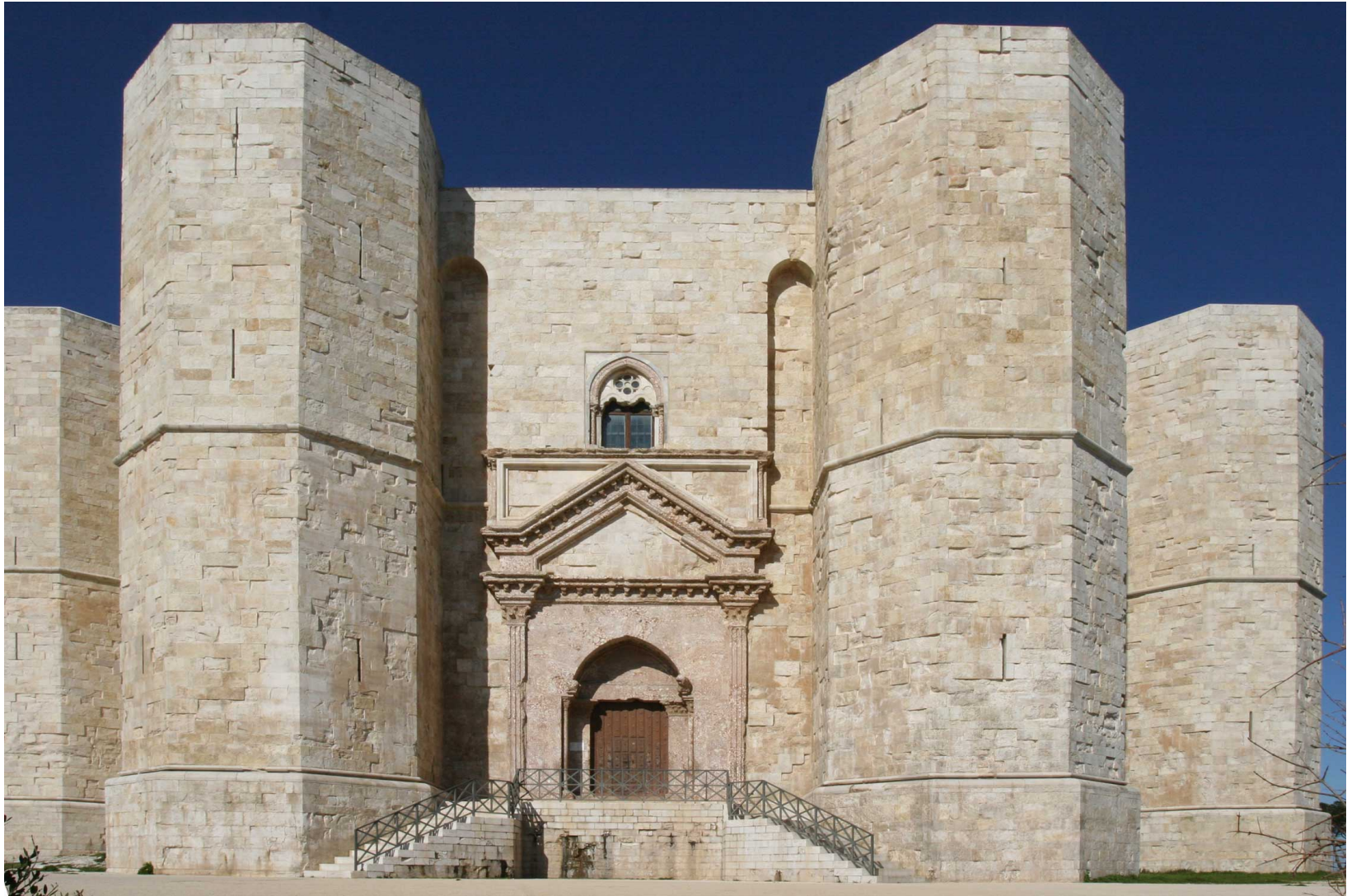


foto-ecl-09-17-06-dl-0020-1.jpg

Crumbling walls with some restoration (postcard picture of the 1950s)



Castel del Monte – Portal



cdm-g110-p105-jm.jpg

Front entrance portal



foto-cdl-09-24-06-dl-0491-2.jpg

Castel del Monte – Rear entrance



cdm-g110-p231-jm.jpg

Towers



foto-cdl-09-17-06-dl-0049-2.jpg

Footings



foto-cul-09-17-06-dl-0042-1.jpg.

Cross vault – ground floor, room 1

[Photographic composition]



cdm-g110-p513-jm.jpg

The cavernous space typical for the 16 rooms at Castel del Monte



foto-cdl-09-24-06-dl-0446-4.jpg

Typical window in the exterior wall on the ground floor



ft-0806-1151-castel-del-mon.jpg

Balcony-like door facing the courtyard, on the upstairs floor



[Photographic composition]



foto-cdl-09-17-06-dl-0214-3.jpg

Tri-style column blending into the wall and supporting the cross vault



foto-cdl-09-17-06-dl-0205-1.jpg

Columns at two cross vault support corners by the courtyard wall



foto-cdl-09-24-06-dl-0452-1.jpg

Columns at the two cross vault support corners by the facade wall

[Photographic composition]



foto-cdl-09-17-06-dl-0205-4.jpg

Ribs accentuating the cross vault and the square perimeter of the cross vault area



[foto-cd]-09-17-06-dl-0108-2.jpg]

Cross vault



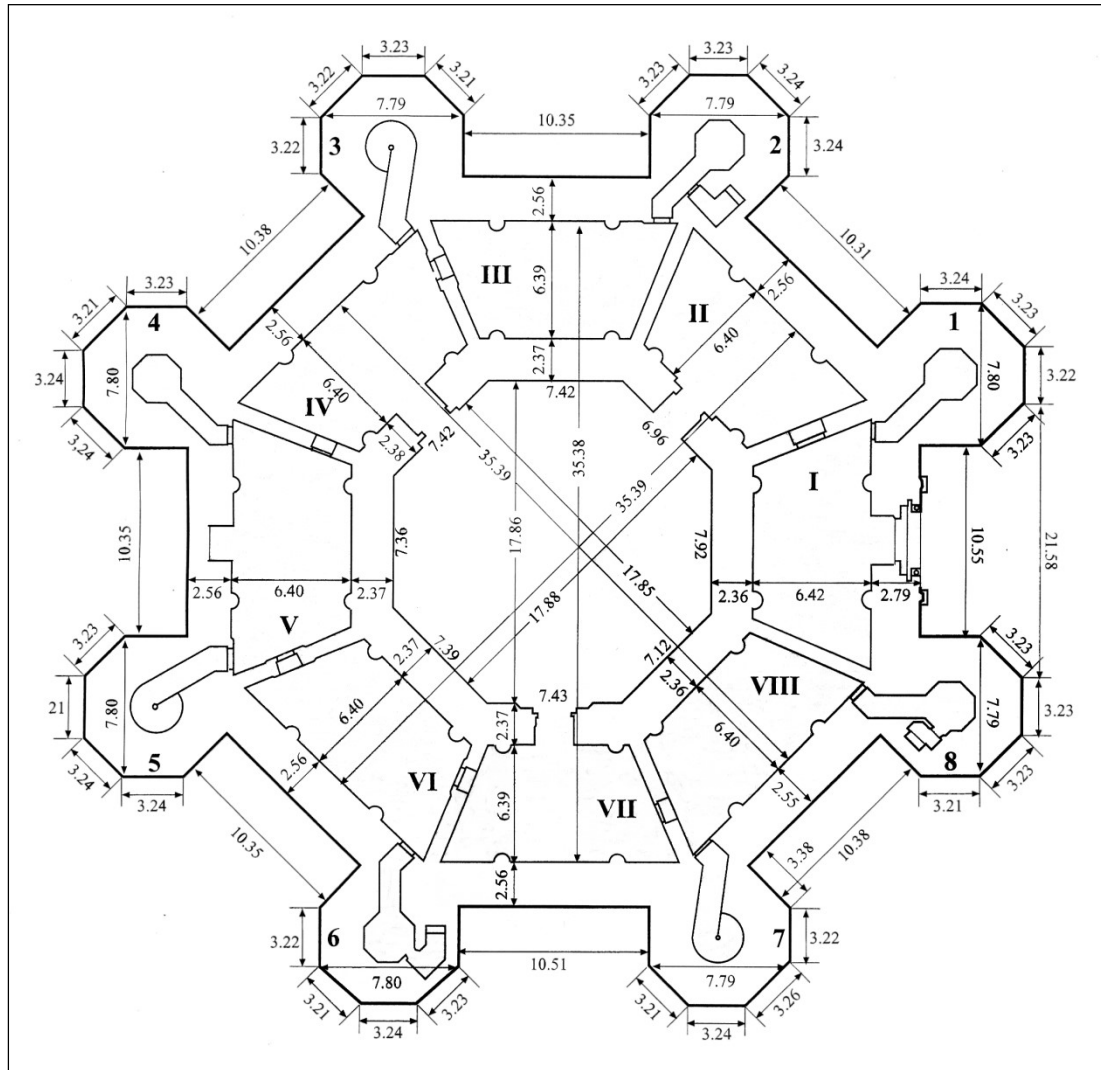
foto-cdl-09-17-06-dl-0212-1.jpg

The trapezoidal room corner



foto-cdl-09-24-06-dl-0410.jpg

The plant design (ground floor) by Heinz Götze



Castel del Monte, Geometric Marvel of the Middle Ages by Heinz Götze - Prestel-Verlag, Munich, New York, 1998 fig. 244.



draw-212-1180=heinz-plant.gif

Stairway access to the upper floor, tower No. 3



foto-cdl-09-17-06-dl-0099-1.jpg

Helical stairway design



looking up



looking down



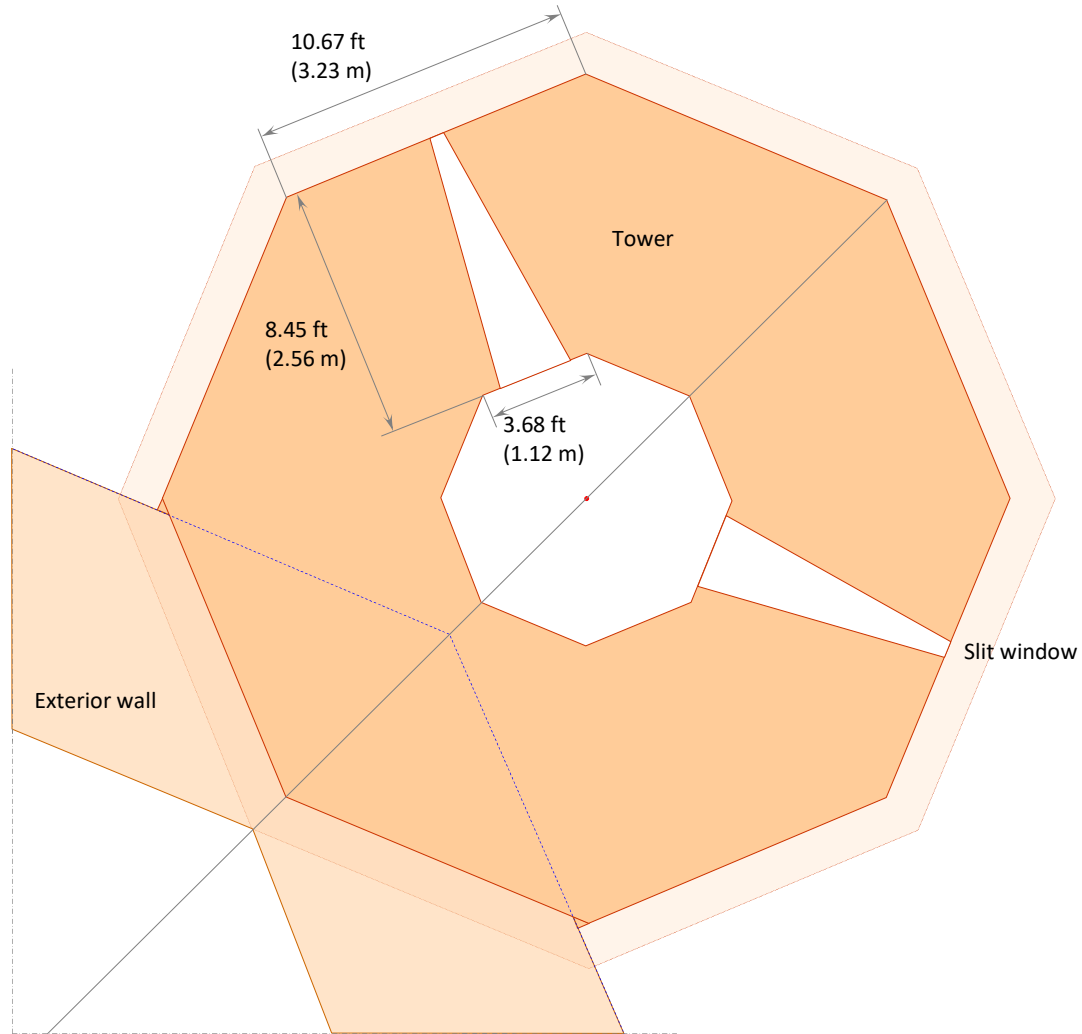
foto-cdl-09-17-06-dl-0152-2.jpg

Slit window tapering inside the towers



foto-cdl-09-17-06-dl-0098-1.jpg

Typical slit window openings through the deep wall in the towers



draw-222-1730=cdl-tower-slit-windows.ppt

Tapering of windows in the deep walls improves natural lighting



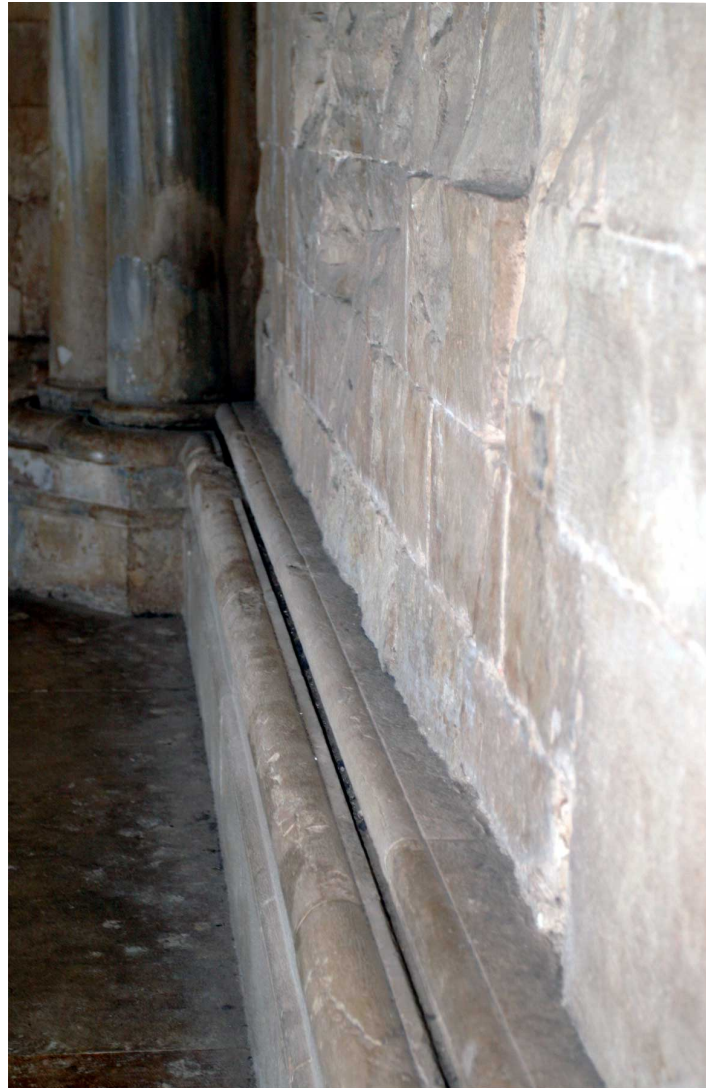
castel del monte-w225.jpg

Stepping and tapering of the window in the throne room



castel del monte-w225.jpg

Room stone face with trimming marking the finishing face line

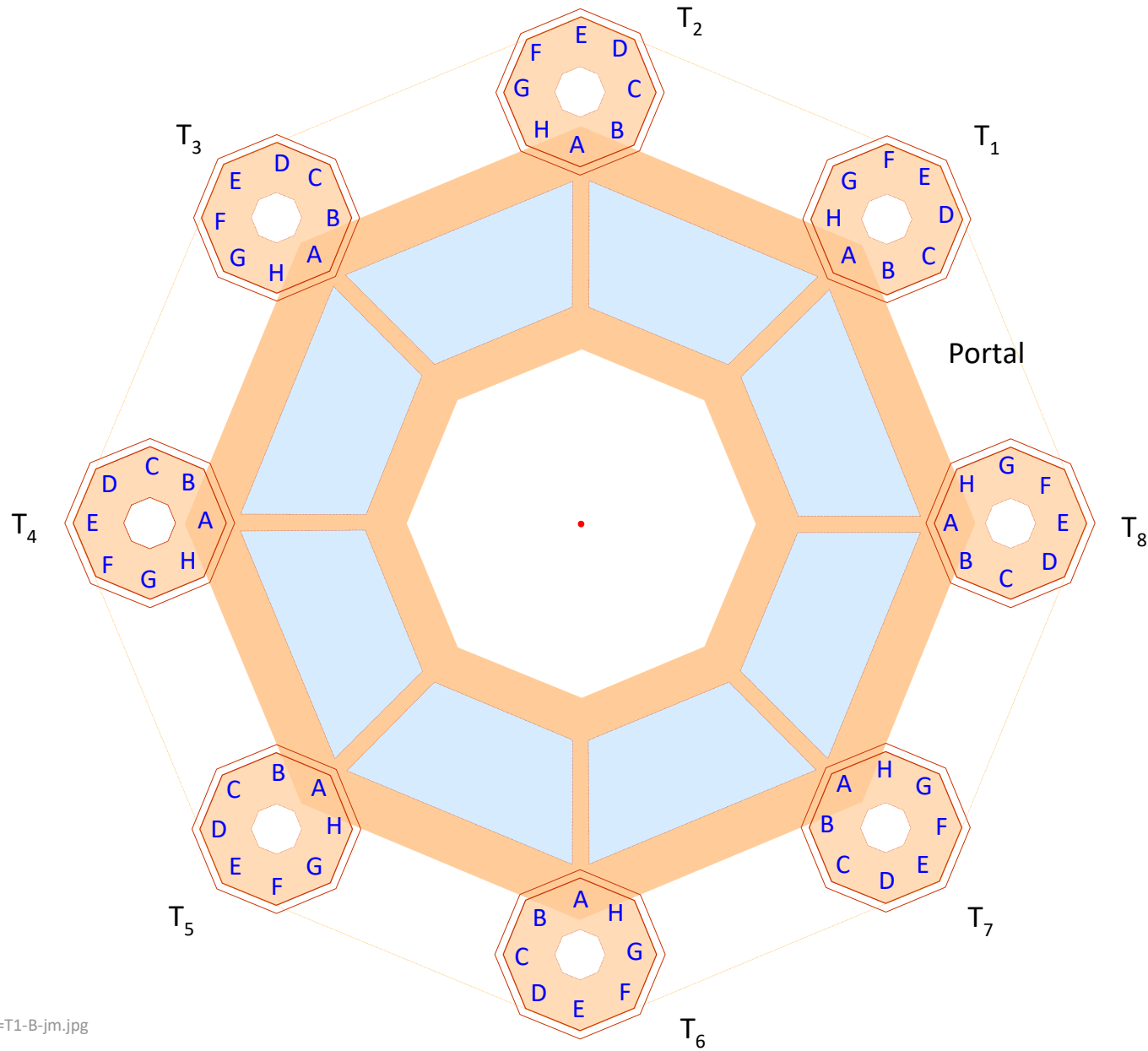


cdm-g110-p651-jm.jpg

Remnant of the walls finishing layer



cdm-g110-p653-jm.jpg



cdm-g110-p711=T1-B-jm.jpg

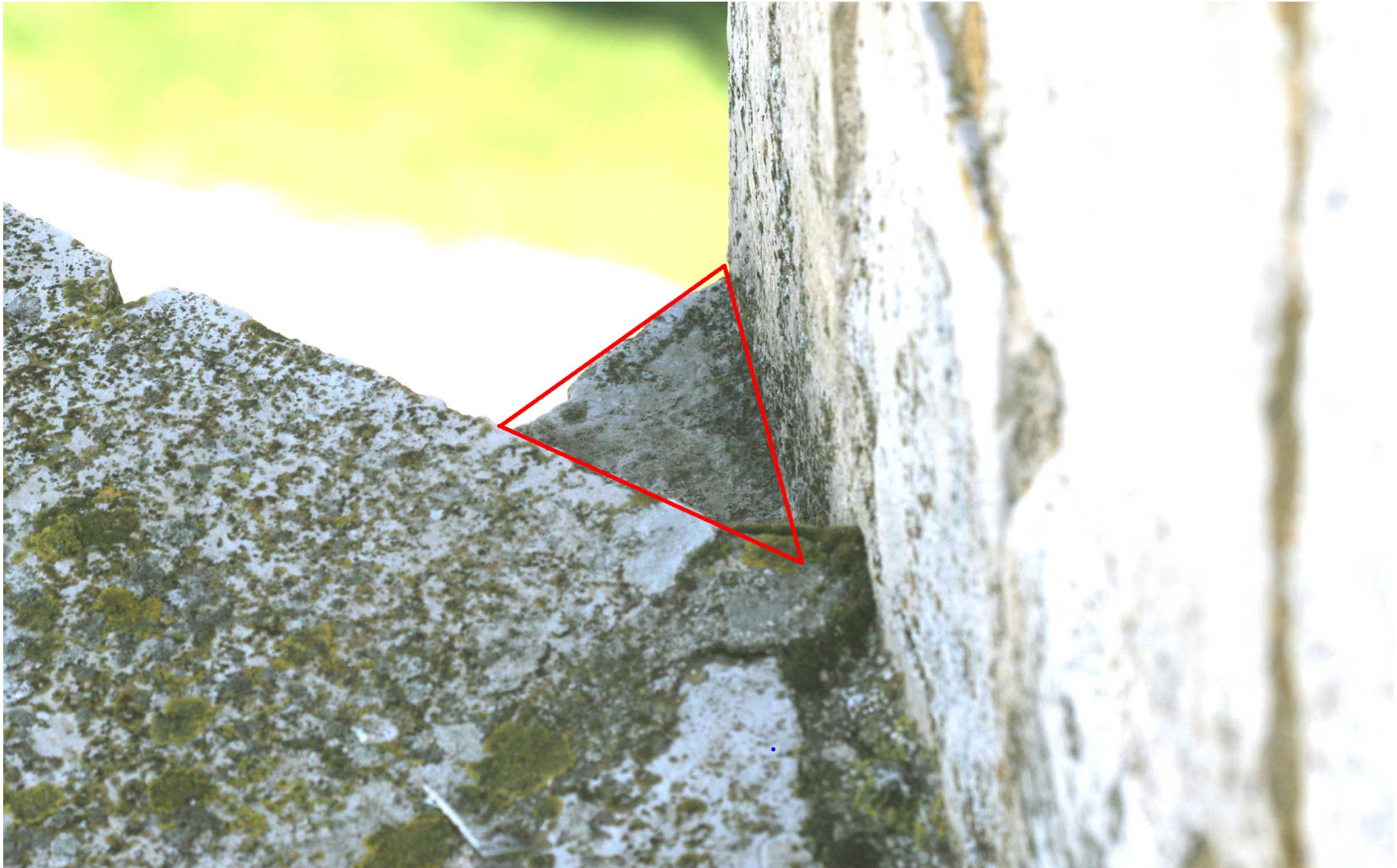
Castel del Monte – Photo Review – Dec 2010 (File 820-120)

Tower-façade corner location on the roof – T1 corner B



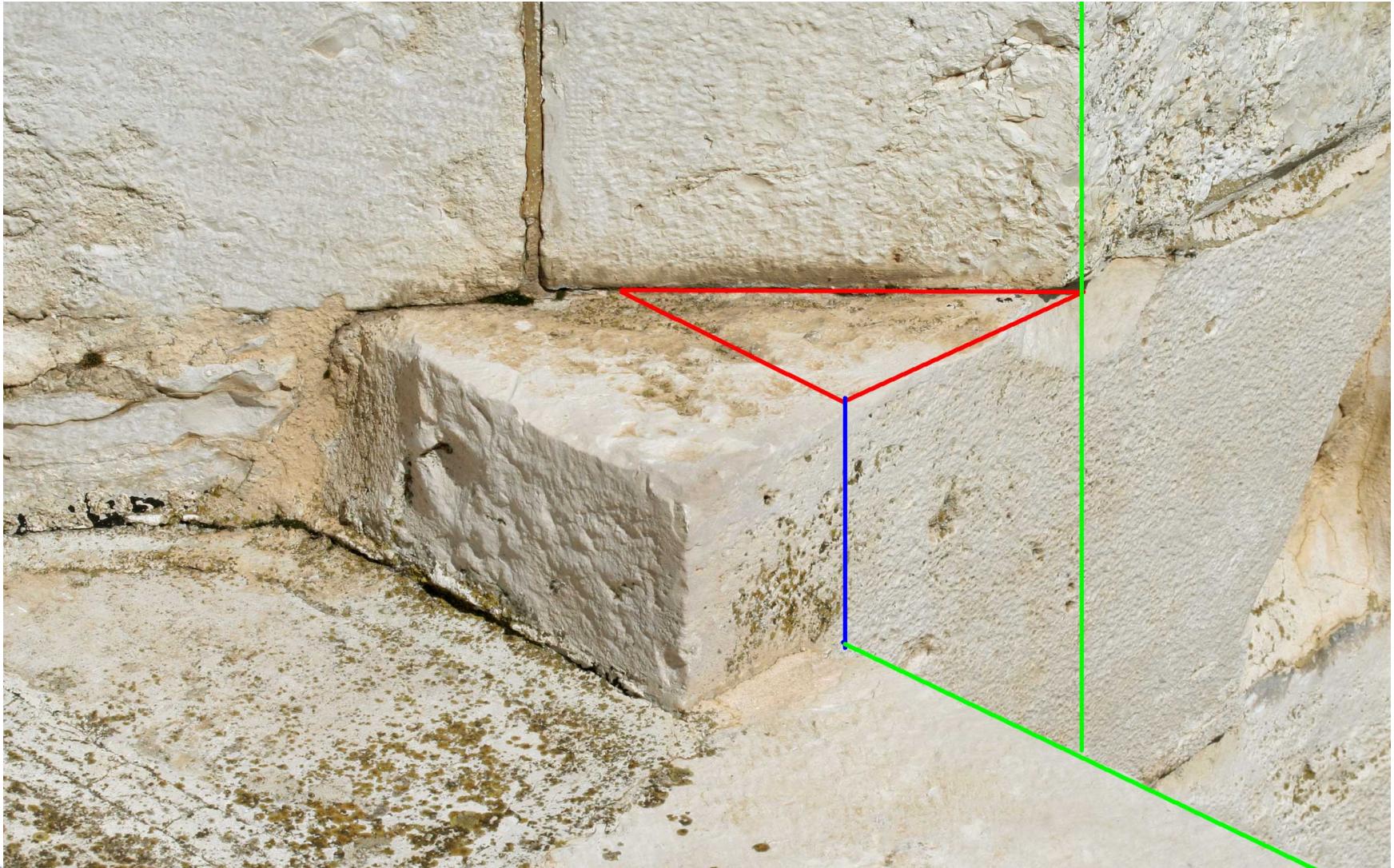
cdm-g110-p711=T1-B-jm.jpg

Tower-façade corner notch on the roof – T1 corner H



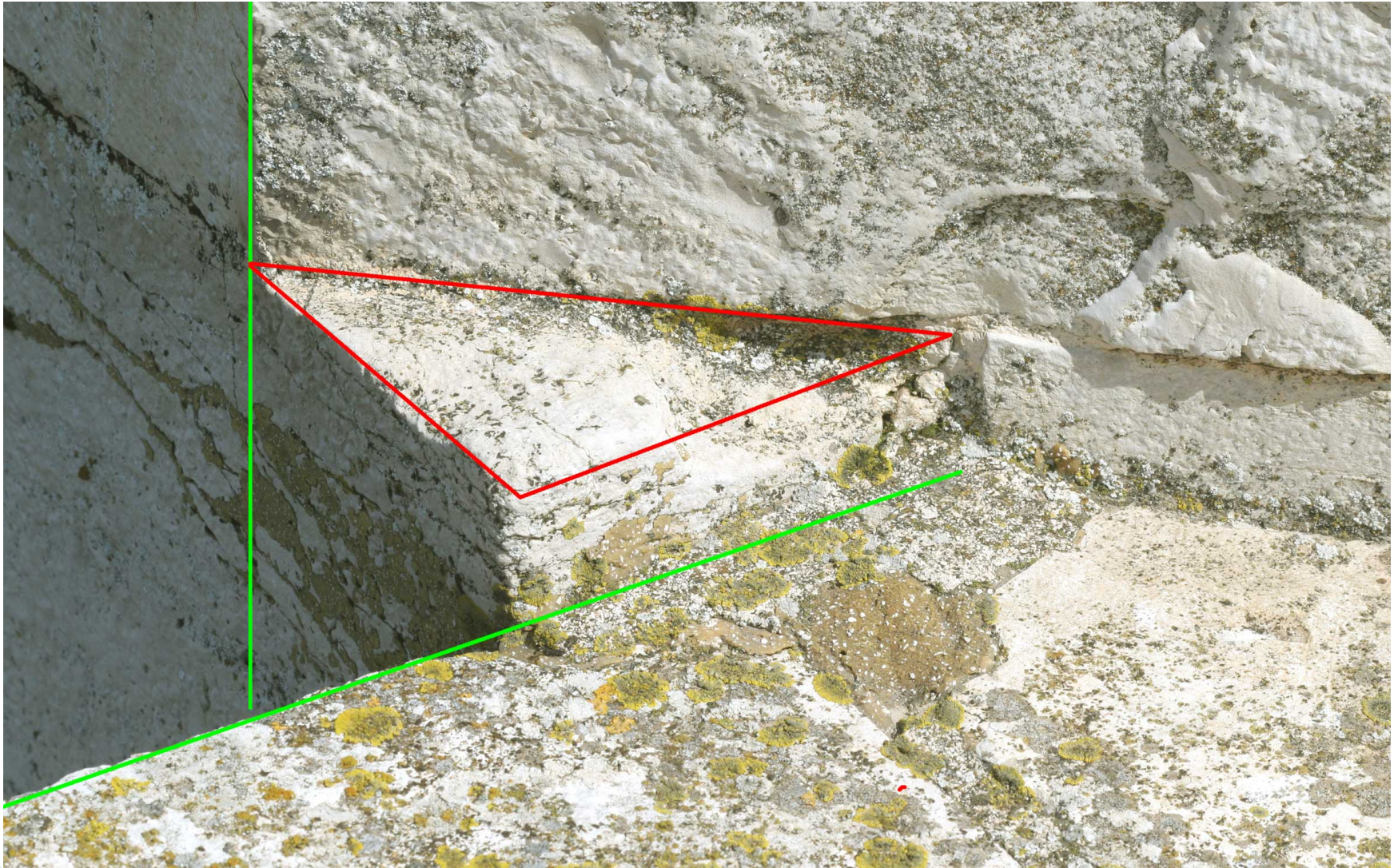
cdm-g110-p715=T1-H-jm.jpg

Tower-façade corner notch on the roof – T2 corner B



cdm-g110-p721=T2-B-jm.jpg

Tower-façade corner notch on the roof – T2 corner H



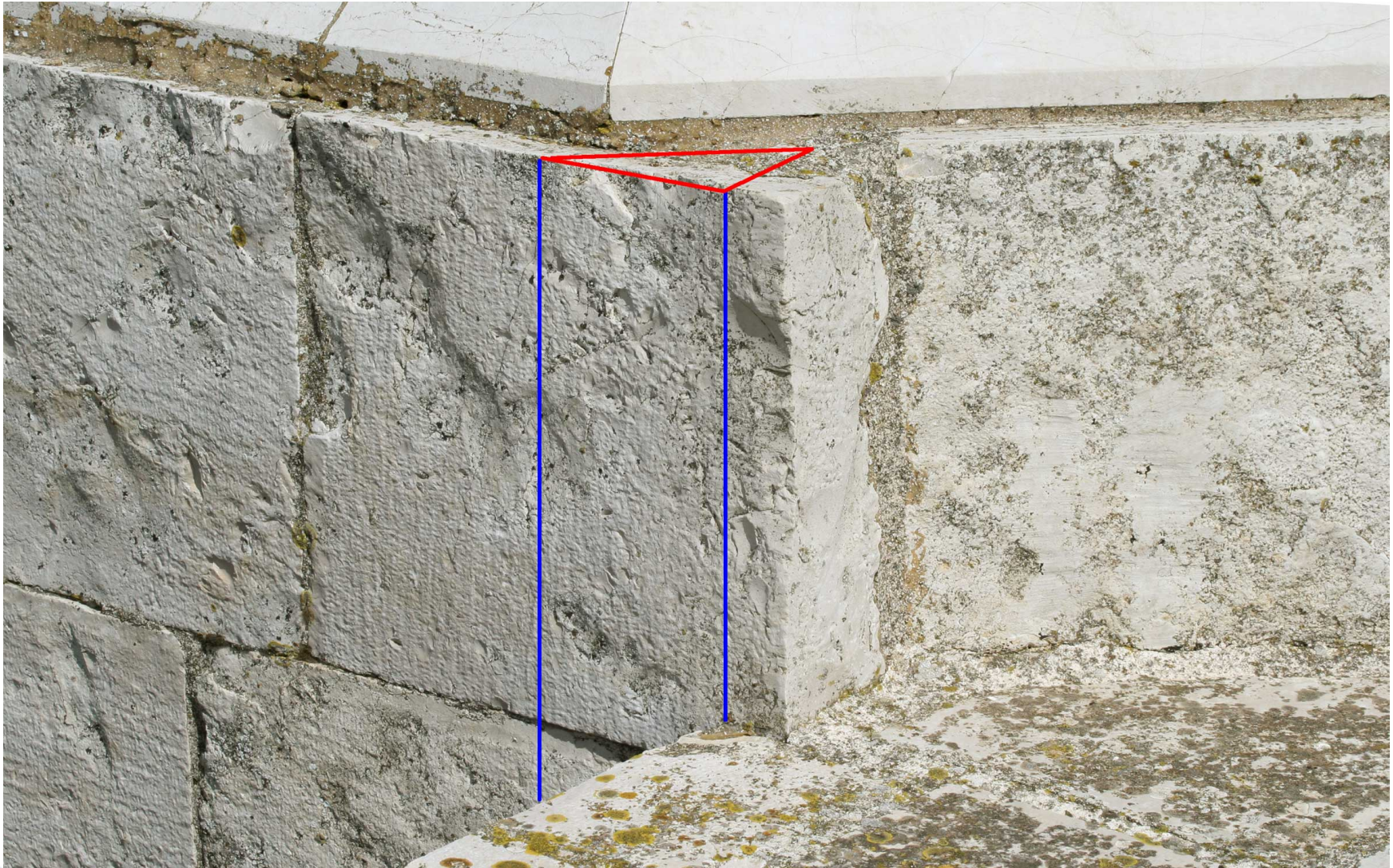
cdm-g110-p725=T2-H-jm.jpg

Tower-façade corner notch on the roof – T3 corner B



cdm-g110-p731=T3-B-jm.jpg

Tower-façade corner notch on the roof – T3 corner H



cdm-g110-p735=T3-H-jm.jpg

Tower-façade corner notch on the roof – T4 corner B



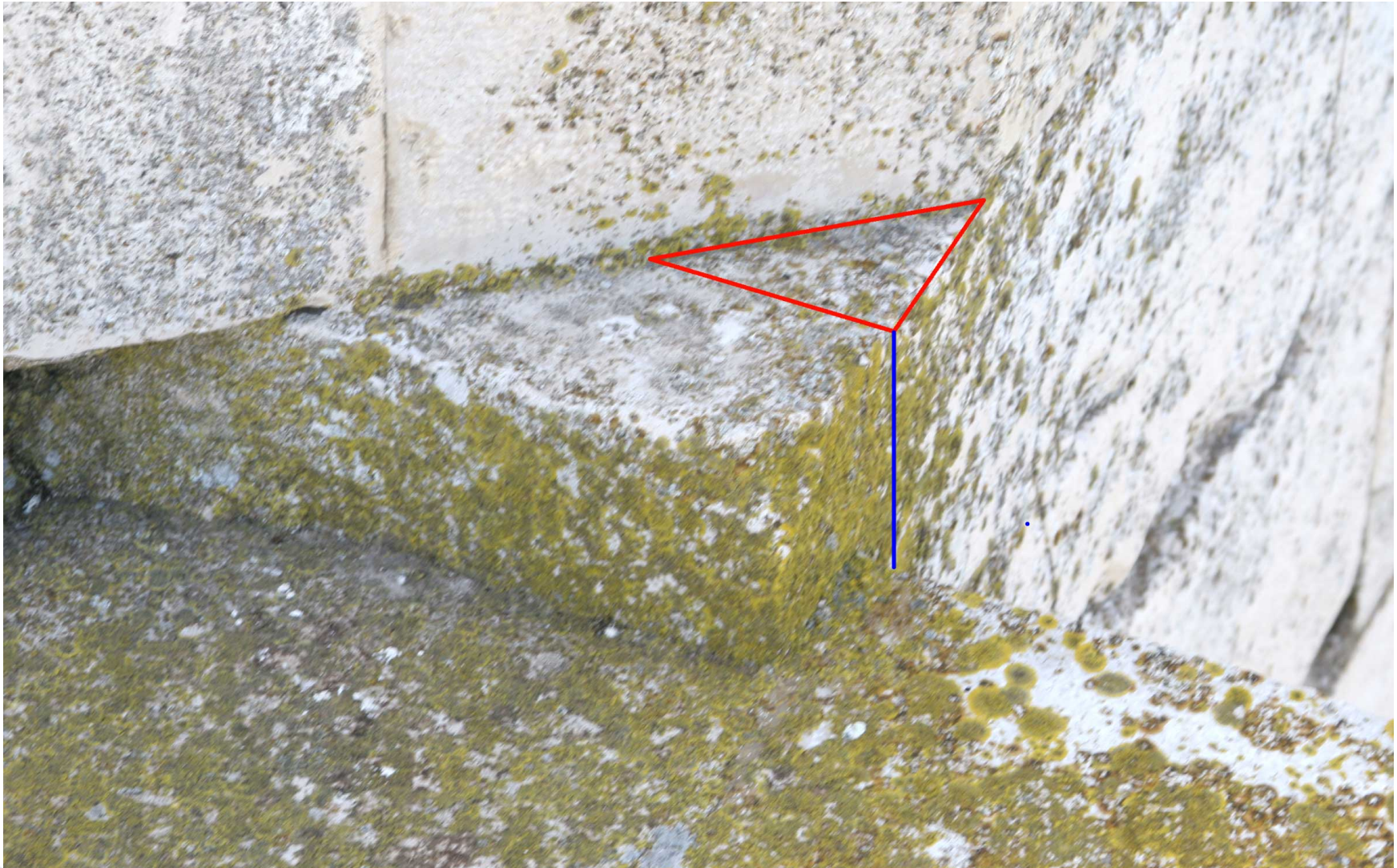
cdm-g110-p741=T4-B-jm.jpg

Tower-façade corner notch on the roof – T4 corner H



cdm-g110-p745=T4-H-jm.jpg

Tower-façade corner notch on the roof – T5 corner B



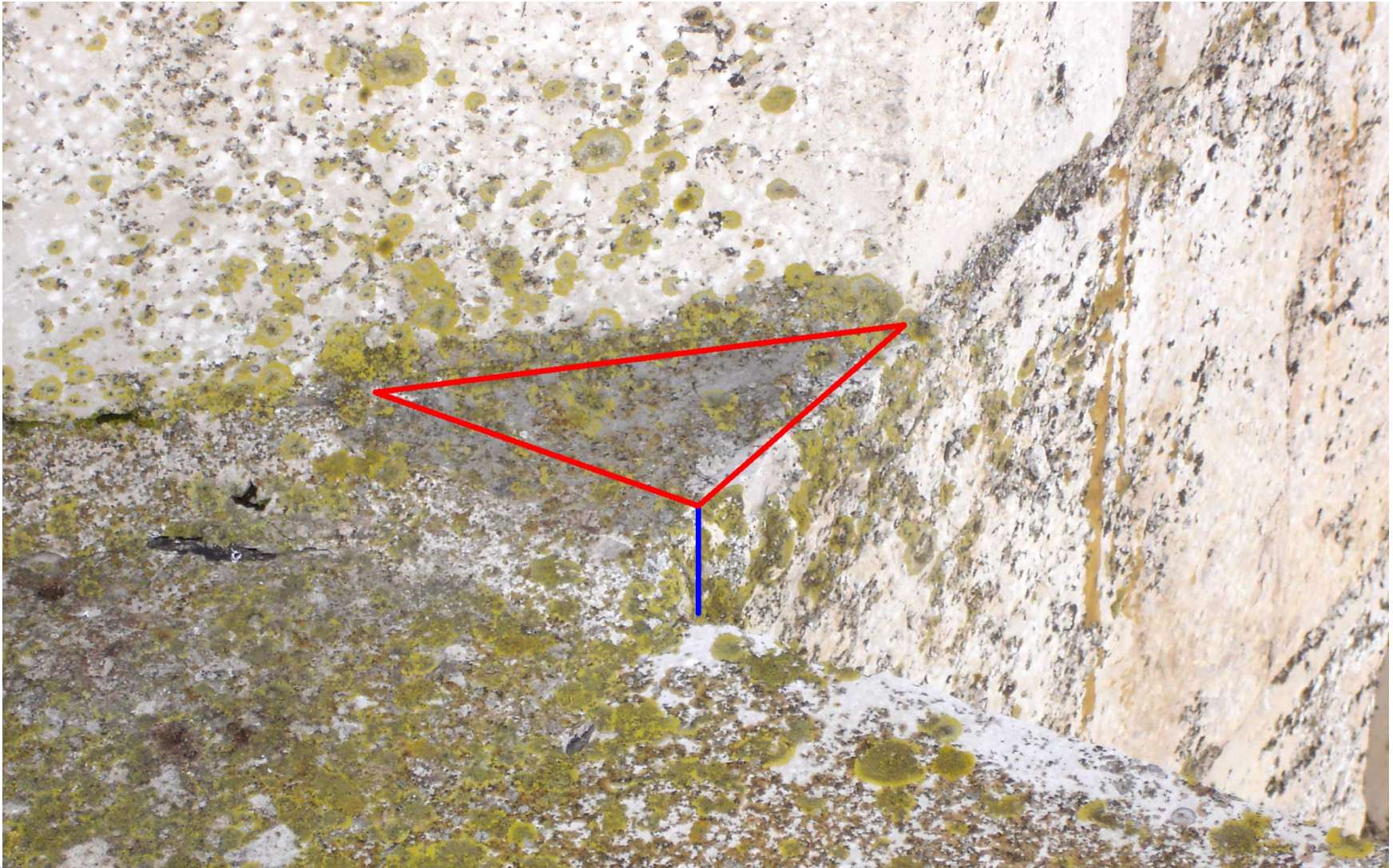
cdm-g110-p751=T5-B-jm.jpg

Tower-façade corner notch on the roof – T5 corner H



cdm-g110-p755=T5-H-jm.jpg

Tower-façade corner notch on the roof – T6 corner B



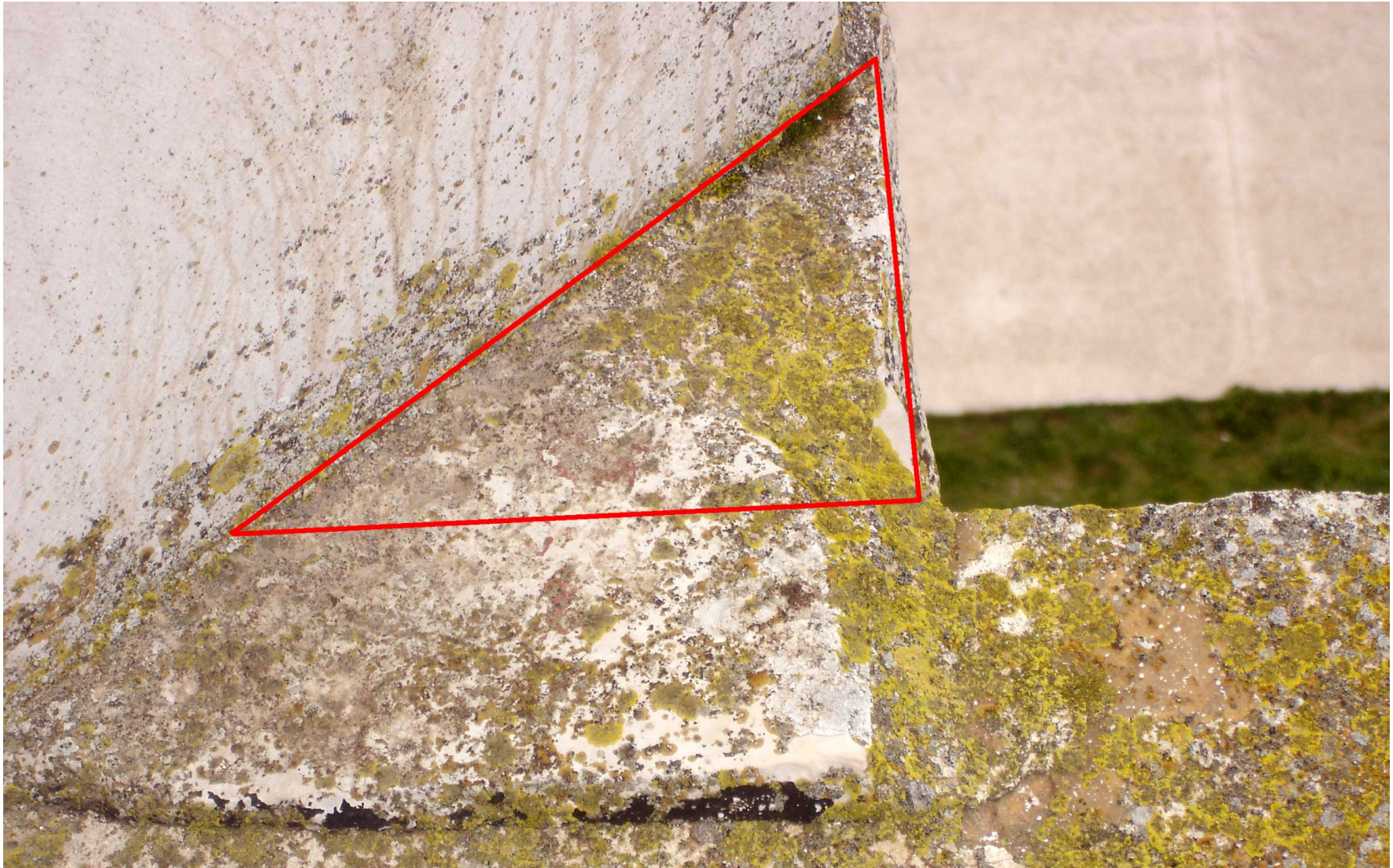
cdm-g110-p761=T6-B-jm.jpg

Tower-façade corner notch on the roof – T6 corner H



cdm-g110-p765=T6-H-jm.jpg

Tower-façade corner notch on the roof – T7 corner B



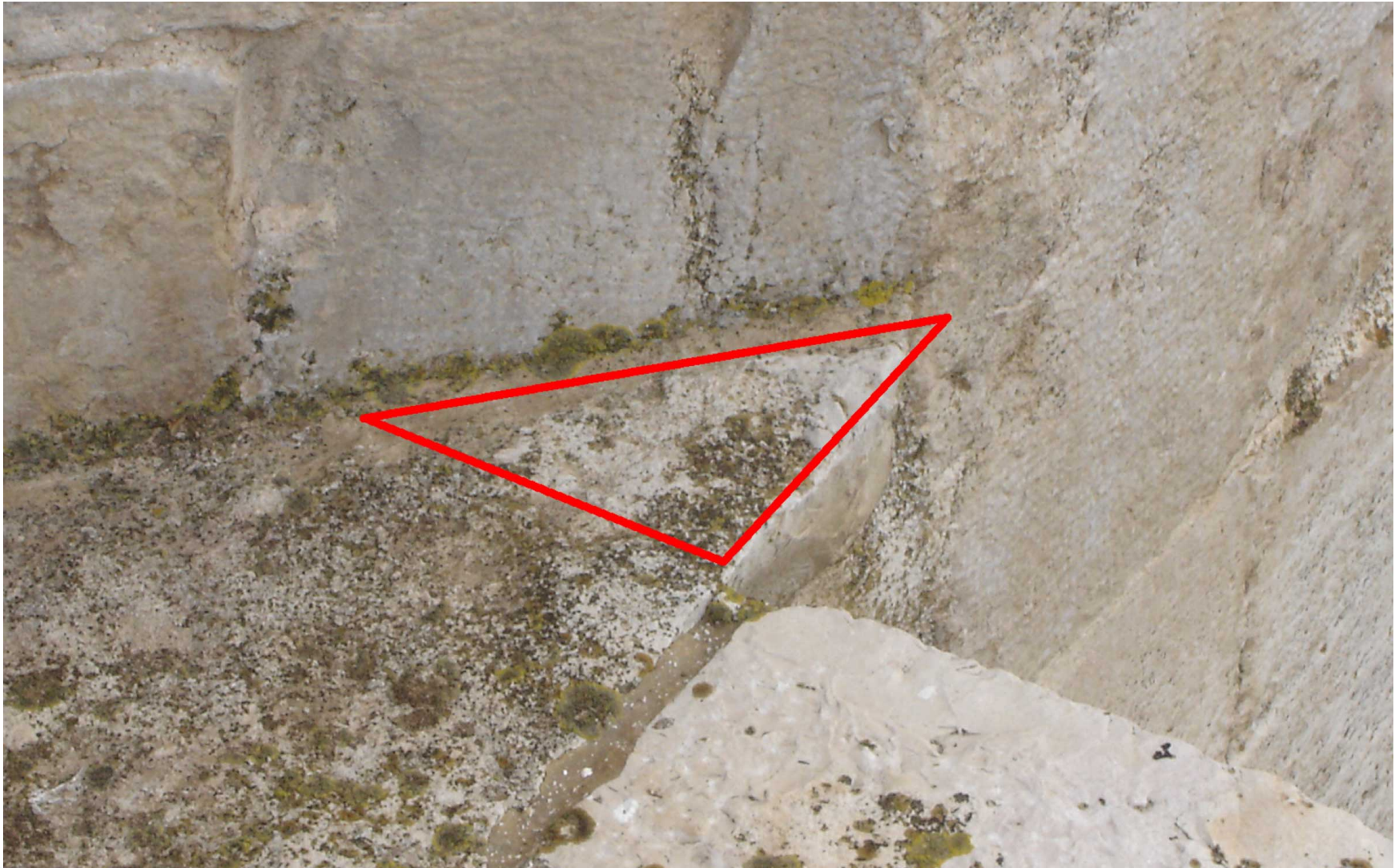
cdm-g110-p771=T7-B-jm.jpg

Tower-façade corner notch on the roof – T7 corner H



cdm-g110-p775=T7-H-jm.jpg

Tower-façade corner notch on the roof – T8 corner B



cdm-g110-p781=T8-B-jm.jpg

Tower-façade corner notch location on the roof – T8 corner H



cdm-g110-p785=T8-H-jm.jpg

Courtyard walls



foto-cdl-09-17-06-dl-0247-1.jpg

Courtyard wall sections around the courtyard octagon



Photographic composition



cdm-g110-p120-jm.jpg

Courtyard octagon looking at the sky



Photographic composition



Octagon looking at the courtyard pavement (photographic composition)



Photographic composition



cdm-g110-p171-jm.jpg

Corbels in the seventh tower



foto-cdl-09-17-06-dl-0158-2.jpg

Corbel sculptured in the form of a man supporting the ceiling on his shoulders
— Source: Ref. 2, Fig. 53, modified



Castel del Monte



foto-cdl-09-24-06-dl-0305-1.jpg

The End

Castel del Monte
Photo Review

Domenico Lanera

